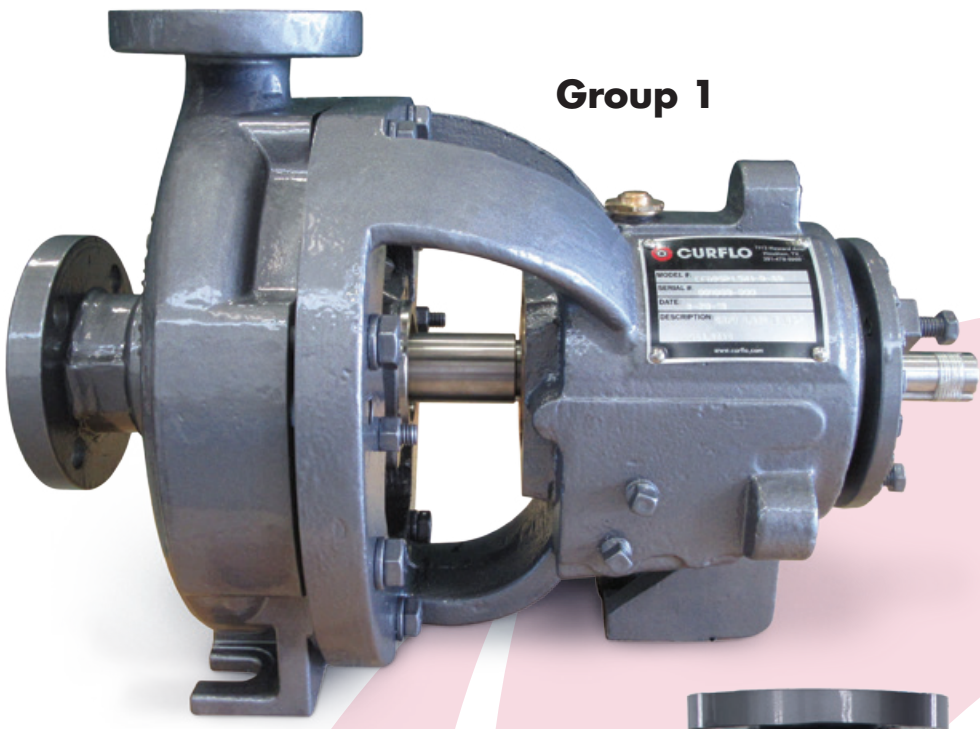


CURFLO

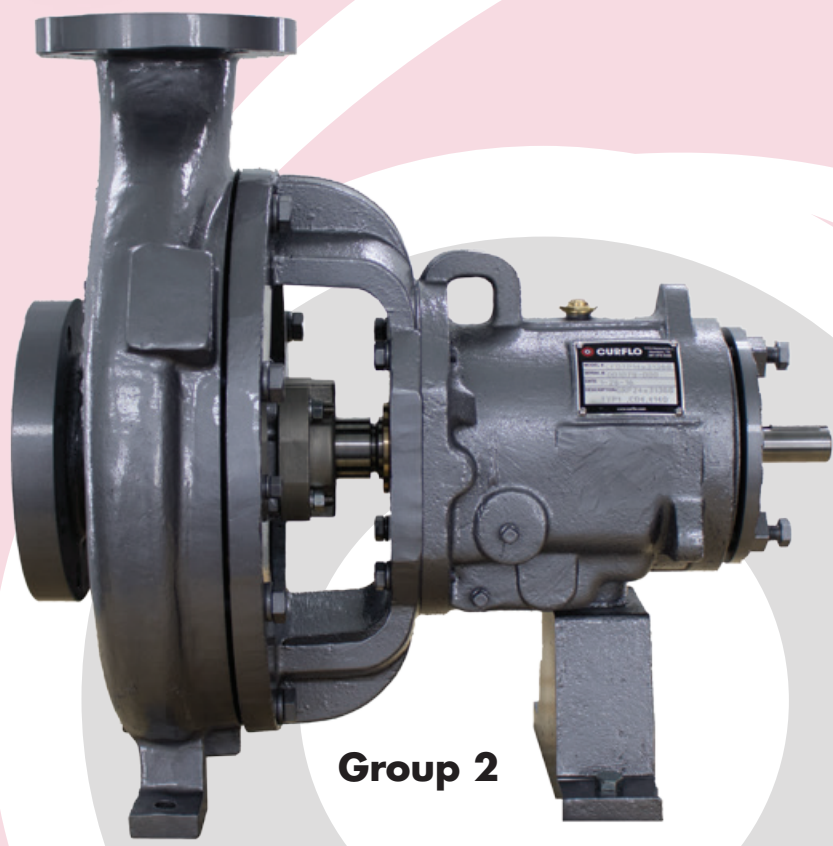
D-Line Series

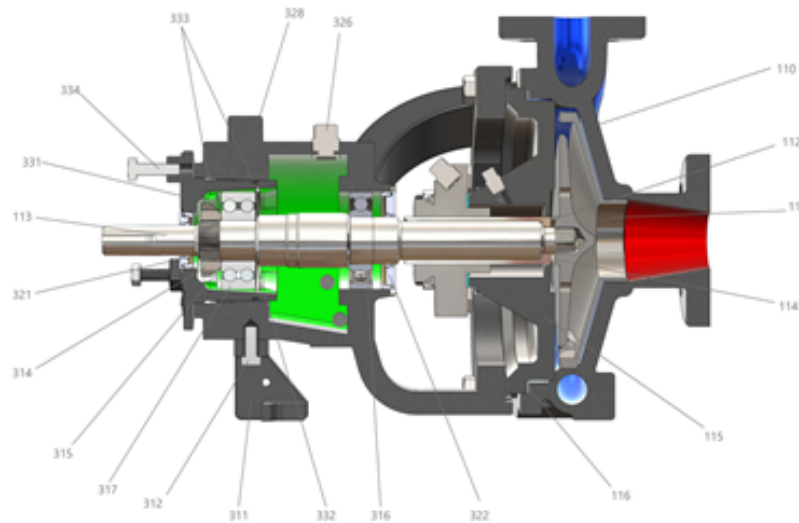
Group 1 | Group 2

Group 1



Group 2





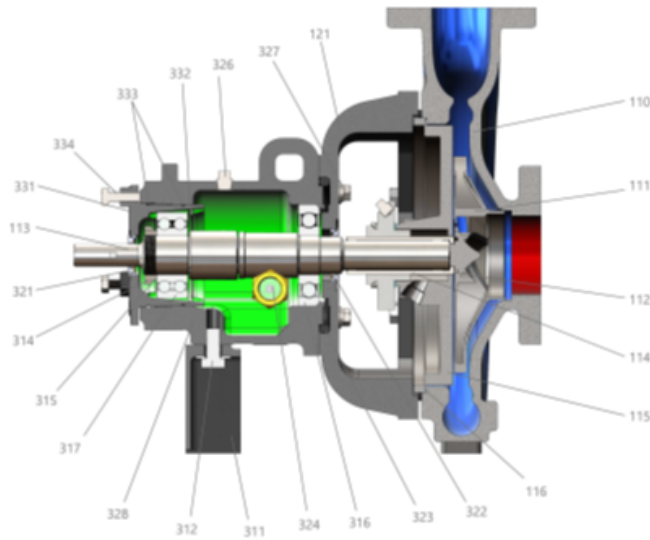
D-LINE GROUP 1

Specifications

- Manufactured to meet ANSI/ ASME B73.1 standard
- Inpro bearing isolators
- SKF or equal bearings
- Standard, large and modified seal chambers
- External impeller adjustment
- Multiple materials of construction available (Carbon Steel, CD4, Alloy 20, Hast C)
- Reverse vane impeller design
- 100% interchangeable with Durco Mark III
- Mark III Groups 1 & 2
- Various shaft and shaft sleeve combinations

PARTS LIST & MATERIALS OF CONSTRUCTION					
ITEM NUMBER	PART NAME	MATERIAL			
		WCB	CD4MCu	HAST C	ALLOY 20
110	Casing	WCB	CD4MCu	HAST C	Alloy 20 *
111	Impeller	DWCB	CD4MCu	HAST C	Alloy 20 *
112	Gasket, Impeller		Teflon		
113	Shaft-Less Sleeve (Optional)		316SS		
113	Shaft-With Sleeve		SAE4140		
114	Shaft Sleeve		316SS	HAST C	Alloy 20 *
115	Plate, Rear Cover	WCB	CD4MCu	HAST C	Alloy 20 *
116	Gasket, Rear Cover		Teflon		
121	Adapter, Bearing Housing (Gr. 2 & 3 Only)	WCB	CD4MCu	HAST C	Alloy 20 *
122	Stud & Nut, Casing	Grade 8	316SS	316SS	316SS
211	Gland, Packing Optional	WCB	316SS	316SS	316SS
210	Seal, Mechanical				
212	Gasket, Gland				
311	Foot, Bearing Housing		WCB		
312	Screw, Foot		C.S.		316SS
313	Shim		SS		
314	Locknut, Bearing		C.S.		
315	Lockwasher, Bearing		C.S.		
316	Bearing, Inboard		C.S.		
317	Bearing, Outboard		C.S.		
318	Key, Shaft/Coupling		C.S.		
321	Oil Seal, (Outboard)		Stainless Steel / Bronze		
322	Oil Seal, (Inboard)		Stainless Steel / Bronze		
323	O-Ring Adapter, (Gr. 2 & 3 Only)		NBR		
324	Sight Gauge, Bearing Housing		WCB		316SS
326	Vent Plug, Bearing Housing		WCB		316SS
327	Capscrew, Adapter, (Gr. 2 & 3 Only)		C.S.		
328	Housing, Bearing		WCB		
331	Carrier, Bearing		WCB		
332	Retainer, Bearing Carrier		C.S.		
333	O-Ring, Bearing Carrier		NBR		
334	Screw, Bearing Carrier		C.S.		
335	Screw, Cover/Adapter		C.S.		

* Availability upon request.

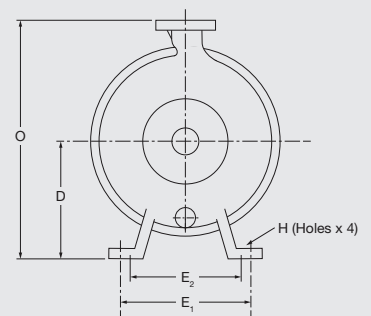
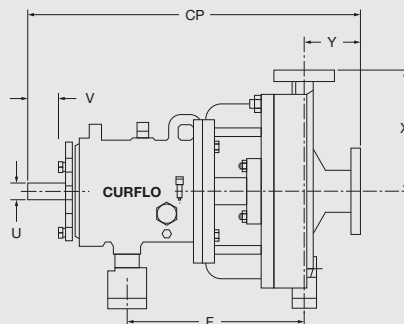


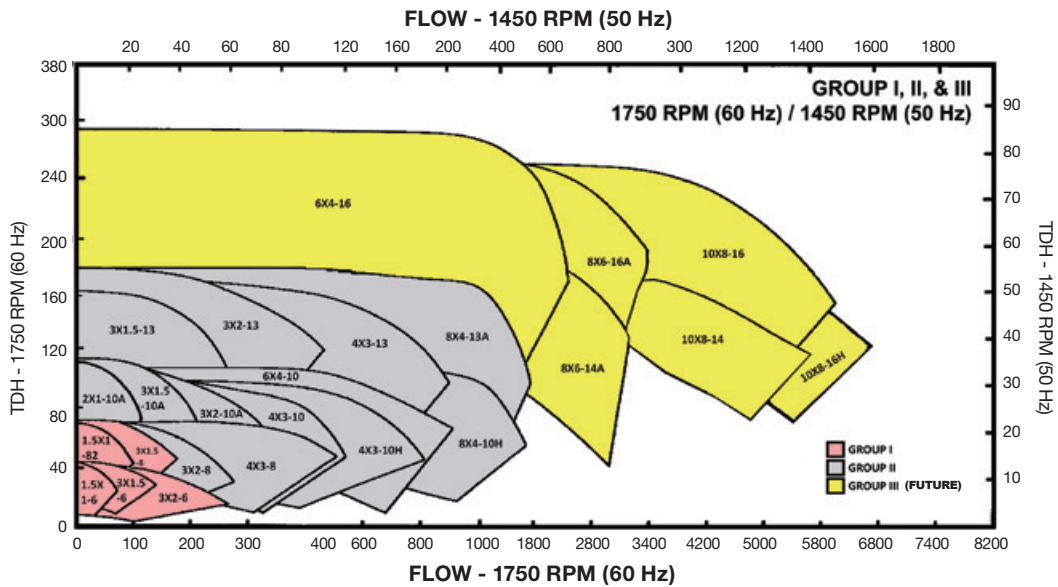
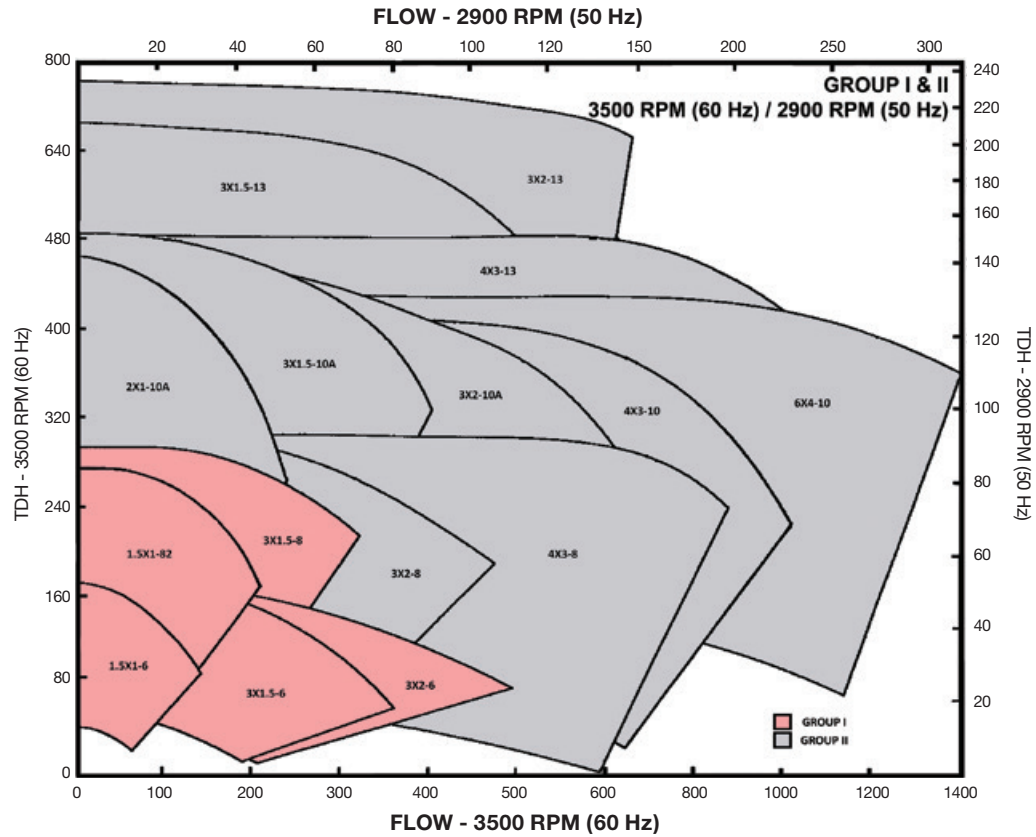
D-LINE GROUP 2

	PUMP SIZE	DISCHARGE	SUCTION	CP	D	X	O	E ₁	E ₂	F	U	Y	V min.	H
Group 1	1.5 x 1-62	1	1.5	17.5	5.25	6.5	11.75	6	0	7.25	0.875	4	2	0.625
	1.5 x 1-82	1	1.5	17.5	5.25	6.5	11.75	6	0	7.25	0.875	4	2	0.625
	3 x 1.5-62	1.5	3	17.5	5.25	6.5	11.75	6	0	7.25	0.875	4	2	0.625
	3 x 1.5-82	2	3	17.5	7.00	7.5	11.75	6	0	7.25	0.875	4	2	0.625
	3 x 2-62	2	3	17.5	5.25	6.5	14.50	6	0	7.25	0.875	4	2	0.625
Group 2	3 x 2-8	2	3	23.5	8.25	9.5	17.75	9.75	7.25	12.5	1.125	4	2.625	0.625
	4 x 3-8	3	4	23.5	8.25	11	19.25	9.75	7.25	12.5	1.125	4	2.625	0.625
	2 x 1-10A	1	2	23.5	8.25	8.5	16.75	9.75	7.25	12.5	1.125	4	2.625	0.625
	3 x 1.5-10A	1.5	3	23.5	8.25	8.5	16.75	9.75	7.25	12.5	1.125	4	2.625	0.625
	3 x 2-10A	2	3	23.5	8.25	9.5	17.75	9.75	7.25	12.5	1.125	4	2.625	0.625
	4 x 3-10	3	4	23.5	8.25	11	19.25	9.75	7.25	12.5	1.125	4	2.625	0.625
	4 x 3-10H	3	4	23.5	10	12.5	22.5	9.75	7.25	12.5	1.125	4	2.625	0.625
	6 x 4-10	4	6	23.5	10	13.5	23.5	9.75	7.25	12.5	1.500	4	2.625	0.625
	6 x 4-10A	4	6	23.5	10	13.5	23.5	9.75	7.25	12.5	1.500	4	2.625	0.625
	6 x 4-10H	4	6	23.5	10	13.5	23.5	9.75	7.25	12.5	1.500	4	2.625	0.625
	3 x 1.5-13	1.5	3	23.5	10	10.5	20.5	9.75	7.25	12.5	1.125	4	2.625	0.625
	3 x 2-13	2	3	23.5	10	11.5	21.5	9.75	7.25	12.5	1.125	4	2.625	0.625
	4 x 3-13	3	4	23.5	10	12.5	22.5	9.75	7.25	12.5	1.125	4	2.625	0.625
	6 x 4-13A	4	6	23.5	10	13.5	23.5	9.75	7.25	12.5	1.125	4	2.625	0.625

All dimensions are in inches.

**D-Line
Dimensional Drawing
(Group 1/Group 2)**





1113 Howard Avenue,
Houston, TX 77536
281.479.5000
Sales@CURFLO.com
www.CURFLO.com



AUTHORIZED DISTRIBUTOR