



G-Line Series

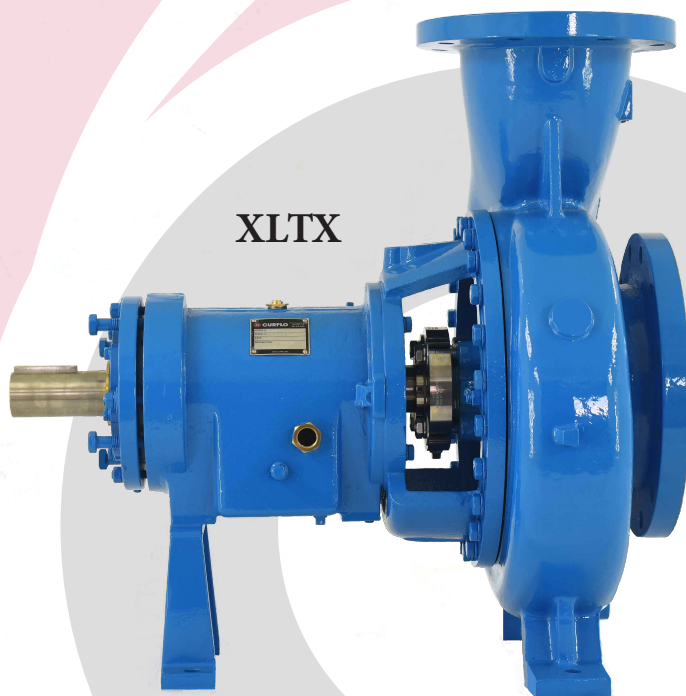
STX | MTX / LTX | XLTX



MTX / LTX

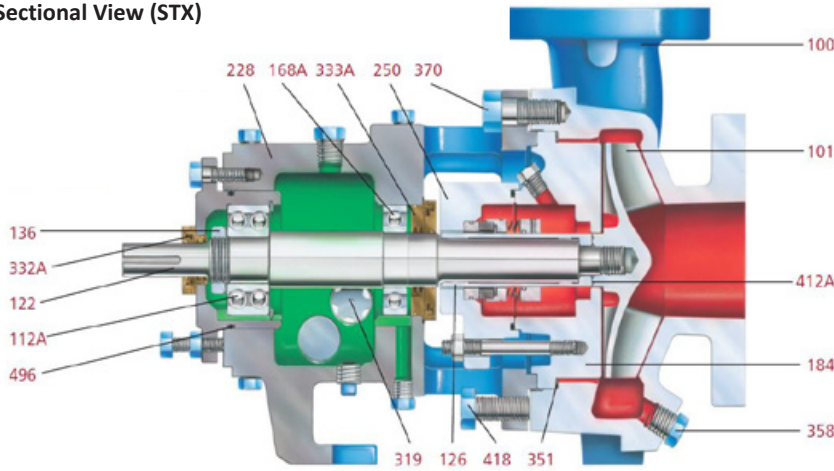


STX

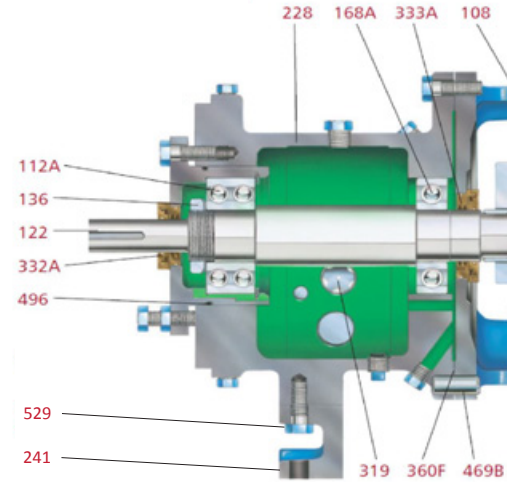


XLTX

Sectional View (STX)



Sectional View (MTX / LTX)

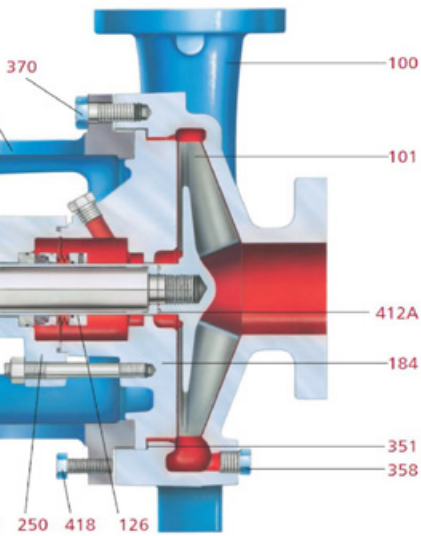


Specifications

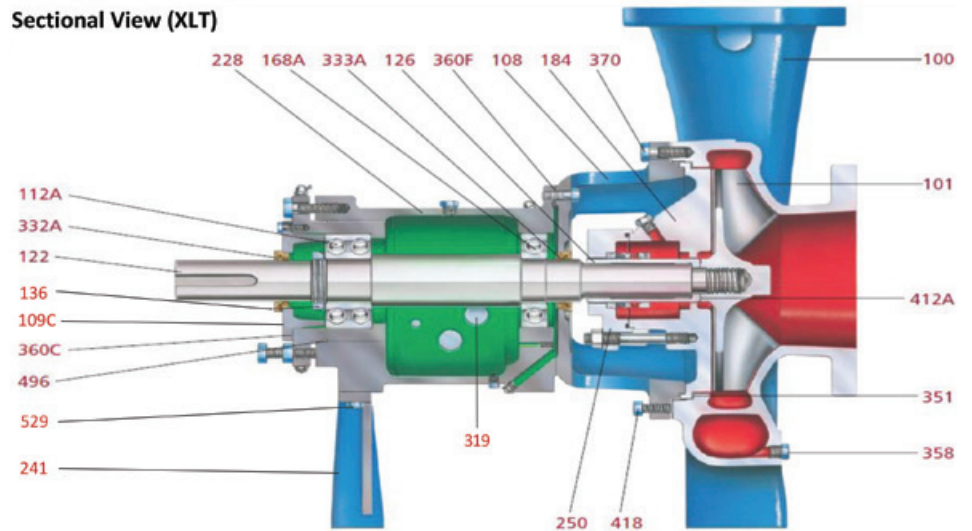
- Manufactured to meet ANSI/ ASME B73.1 standard
- SKF bearings
- Standard, large and modified seal chambers
- Multiple materials of construction available (WCB & CD4)
- Open impeller design
- 100% interchangeable with Goulds 3196
- STX, MTX, LTX, and XLT models
- Low Flow available in select sizes
- Orion Bearing Isolators

PARTS LIST & MATERIALS OF CONSTRUCTION

ITEM NUMBER	PART NAME	MATERIAL		
		WCB	CD4MCu	
100	Casing	WCB	CD4MCu	
101	Impeller	WCB	CD4MCu	
108	Frame Adapter		WCB	
109C	Cover, Bearing Outboard (XLT Only)		WCB	
112A	Thrust Bearing		Double Row Angular Contact	
122	Shaft-Less Sleeve (Optional)		316SS	
122	Shaft-With Sleeve		4140	
126	Shaft Sleeve		316SS	
136	Bearing Locknut & Lockwasher		Steel	
168A	Radial Bearing		Single Row Ball	
184	Seal Chamber/Stuffing Box Cover	WCB		CD4MCu
228	Bearing Frame		WCB	
241	Foot, Frame (MTX & XLT Only)		WCB	
250	Gland		316SS	
319	Oil Sight Glass		Glass / Bronze	
332A	Bearing Isolator (Outboard)		Bronze w/Viton O-Rings	
333A	Bearing Isolator (Inboard)		Bronze w/Viton O-Rings	
351	Casing Gasket		Teflon	
358	Casing Drain Plug (Optional)	Grade 5	316SS	
360F	Gasket, Frame-to Adapter (MTX & XLT Only)		Vellumoid	
360C	Gasket, Bearing End Cover (XLT Only)		Vellumoid	
370	Bolt, Adapter-to-Case	Grade 5		
412A	O-Ring, Impeller		Teflon	
418	Jacking Bolt, Adapter-to Case		Grade 5	
469B	Dowel Pin, Frame-to Adapter		Steel	
496	O-Ring, Bearing Housing		Buna N	
529	Bolt, Frame Foot to Frame (MTX & XLT Only)		Grade 5	

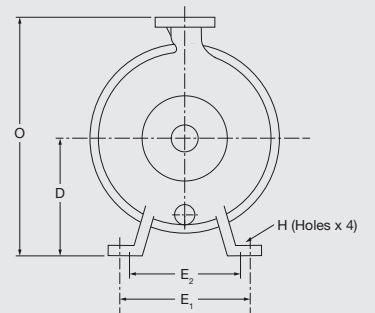
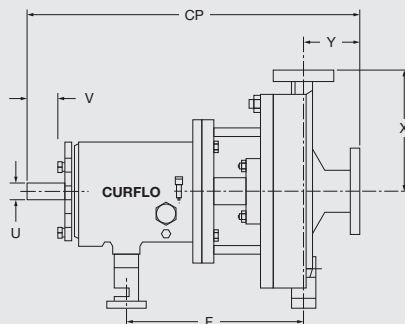


Sectional View (XLT)

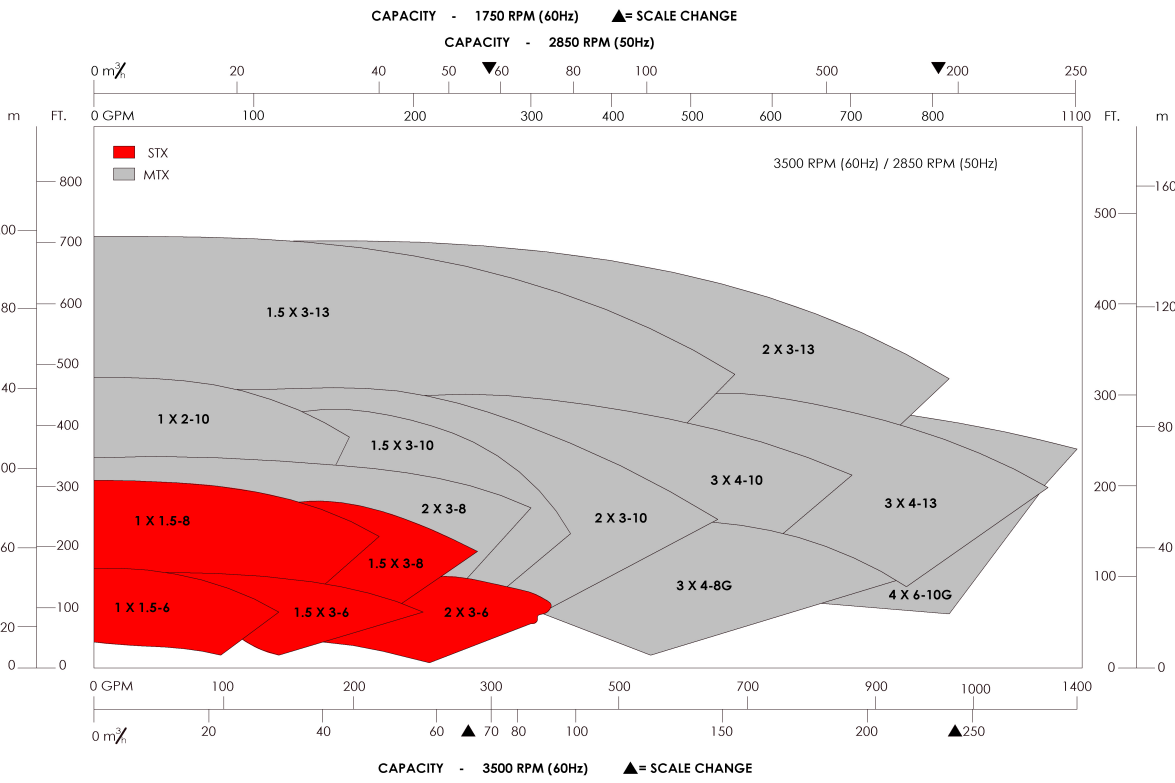
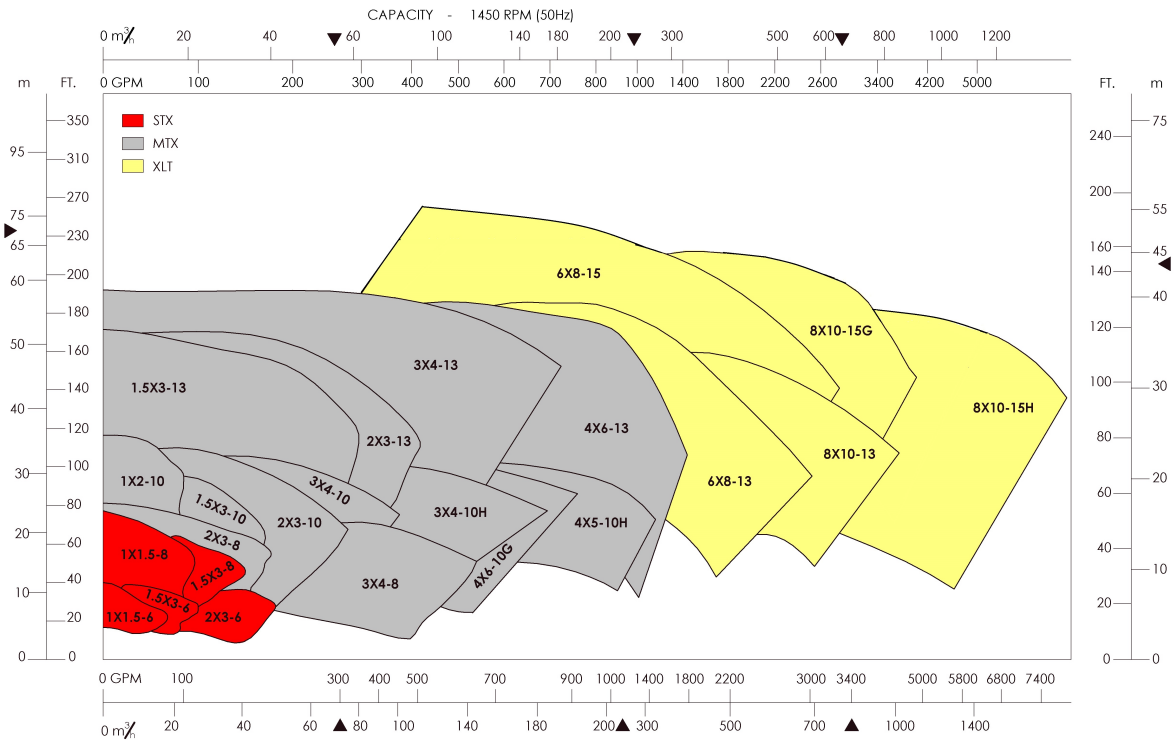


	PUMP SIZE	DISCHARGE	SUCTION	CP	D	X	O	E ₁	E ₂	F	U	Y	V min.	H
STX	1x1.5-6	1	1.5	17.5	5.25	6.5	11.75	6	0	7.25	0.875	4	2	0.625
	1.5x3-6	1.5	3	17.5	5.25	6.5	11.75	6	0	7.25	0.875	4	2	0.625
	2x3-6	2	3	17.5	5.25	6.5	11.75	6	0	7.25	0.875	4	2	0.625
	1x1.5-8	1	1.5	17.5	5.25	6.5	11.75	6	0	7.25	0.875	4	2	0.625
	1.5x3-8	1.5	3	17.5	5.25	6.5	11.75	6	0	7.25	0.875	4	2	0.625
MTX & LTX	2x3-8	2	3	23.5	8.25	9.5	17.75	9.75	7.25	12.5	1.125	4	2.625	0.625
	3x4-8	3	4	23.5	8.25	11	19.25	9.75	7.25	12.5	1.125	4	2.625	0.625
	3x4-8G	3	4	23.5	8.25	11	19.25	9.75	7.25	12.5	1.125	4	2.625	0.625
	1x2-10	1	2	23.5	8.25	8.5	16.75	9.75	7.25	12.5	1.125	4	2.625	0.625
	1.5x3-10	1.5	3	23.5	8.25	8.5	16.75	9.75	7.25	12.5	1.125	4	2.625	0.625
	2x3-10	2	3	23.5	8.25	9.5	17.75	9.75	7.25	12.5	1.125	4	2.625	0.625
	3x4-10	3	4	23.5	8.25	11	19.25	9.75	7.25	12.5	1.125	4	2.625	0.625
	3x4-10H	3	4	23.5	10	12.5	22.50	9.75	7.25	12.5	1.125	4	2.625	0.625
	4x6-10	4	6	23.5	10	13.5	23.50	9.75	7.25	12.5	1.125	4	2.625	0.625
	4x6-10H	4	6	23.5	10	13.5	23.50	9.75	7.25	12.5	1.125	4	2.625	0.625
	1.5x3-13	1.5	3	23.5	10	10.5	20.50	9.75	7.25	12.5	1.125	4	2.625	0.625
	2x3-13	2	3	23.5	10	11.5	21.50	9.75	7.25	12.5	1.125	4	2.625	0.625
	3x4-13	3	4	23.5	10	12.5	22.50	9.75	7.25	12.5	1.125	4	2.625	0.625
	4x6-13	4	6	23.5	10	13.5	23.50	9.75	7.25	12.5	1.125	4	2.625	0.625
XLTX	6x8-13	6	8	33.875	14.5	16	30.5	16	9	18.75	2.375	6	4	0.875
	8x10-13	8	10	33.875	14.5	18	32.5	16	9	18.75	2.375	6	4	0.875
	6x8-15	6	8	33.875	14.5	18	32.5	16	9	18.75	2.375	6	4	0.875
	8x10-15	8	10	33.875	14.5	18	32.5	16	9	18.75	2.375	6	4	0.875
	8x10-15G	8	10	33.875	14.5	19	33.5	16	9	18.75	2.375	6	4	0.875

G-Line Dimensional Drawing (STX/MTX/LTX/XLTX)



G-Line Series



1113 Howard Avenue,
Houston, TX 77536
281.479.5000
Sales@CURFLO.com
www.CURFLO.com



Any reference to the O.E.M. model number or other O.E.M. information is for the purpose of identification only and does not imply that the part or pump was manufactured by the original equipment manufacturer.