

**CURFLO**

**PREMIER**

MANUFACTURER  
OF AFTERMARKET ANSI PUMPS



# **XL-BLENDER PUMPS**

SOLUTIONS UNIQUELY ENGINEERED FOR YOU



# CURFLO XL BLENDER PUMP

## INFORMATION

*CURFLO XL Blender pumps are designed to maximize run life in Fracking Blender Unit applications.*

### **ALL CURFLO XL variants:**

- Available in 14x12x22 Size
- Offer dimensional drop-in replacement for original OEM Magnum pumps, without modification to the blender unit.
- Constructed of a high-chrome, hard iron material for extreme durability
- Come with a choice of mechanical seals:
  - TC / TC / 316 Type 1 Seal
  - Diamond Coat Type 1 Seal for enhanced protection against dry-running

### **XL Blender Pump - Standard:**

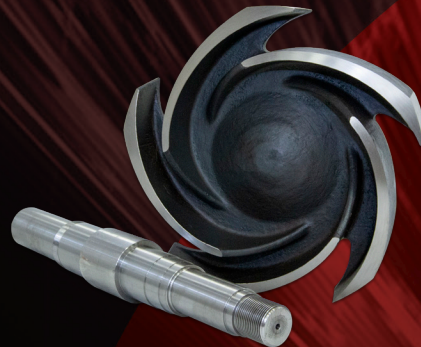
- Duplicates the original design of OEM Magnum pumps, allowing retrofit of spare parts into OEM pumps, and easy drop-in replacement of complete pumps.



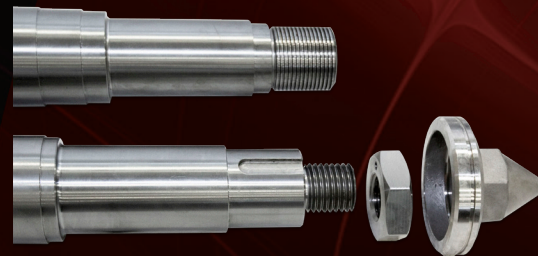
### **XL Enhanced Blender Pump:**

Extended run-life model with enhanced features:

- Solid Hub impeller cast from High-Chrome hard iron



- Impeller threads onto large diameter pump shaft designed for heavy power transmission



### **XL Ultimate Blender Pump:**

Includes XL Enhanced features in a closed-vane impeller version for higher performance and efficiency



# CURFLO

e-mail: [sales@curflo.com](mailto:sales@curflo.com) | phone: 281.479.5000 | web: [curflo.com](http://curflo.com)

**Curry FluidPower**

